

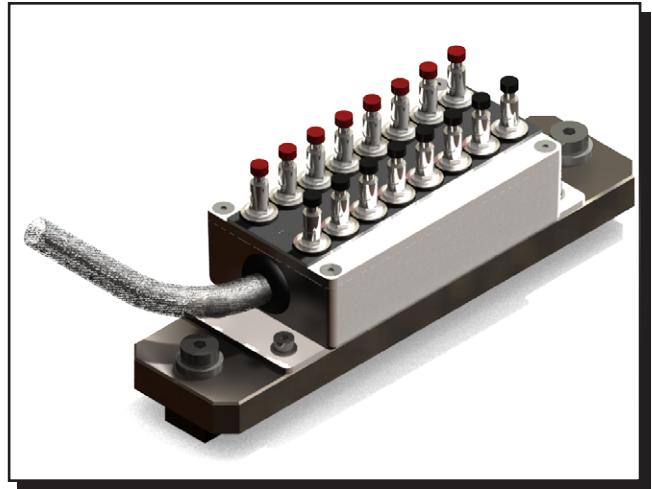
TCB Series Thermocouple Connection Box

FEATURES

- Extends thermocouple connections up to 3 m from DAQ device
- For use with J or T type thermocouples
- Push posts for easy thermocouple connection
- Mountable to T-slot table/base plate

DESCRIPTION

The TCB Thermocouple Connection Box provides a method of connecting the data acquisition device, which is usually installed in the main console, to the device being monitored—up to 3 meters away. All eight thermocouple pairs are bundled into a single cable and terminated in a die cast aluminum box with push posts for easy connection. The box is supplied with T-nuts for easy mounting to a T-slot table or Magtrol PT 25 Base Plate.



ORDERING INFORMATION

MODEL NUMBER:	TCB -	□	□	□
THERMOCOUPLE NUMBERS				
• 1 through 8		A		
• 9 through 16		B		
THERMOCOUPLE TYPE				
• 0 °C to 750 °C		J		
• -250 °C to 350 °C		T		
CABLE LENGTH				
• 3 meters				3

DIMENSIONS

	in	mm
width	7.874	200
depth	1.968	50
height	2.717	69

NOTE: Dimensions include height of push posts.

Detailed dimension drawings can be found on Magtrol's web site. Solid 3D models are also available by contacting Magtrol Customer Service.

Due to the continual development of our products, we reserve the right to modify specifications without forewarning.



www.magtrol.com

MAGTROL INC
70 Gardenville Parkway
Buffalo, New York 14224 USA
Phone: +1 716 668 5555
Fax: +1 716 668 8705
E-mail: magtrol@magtrol.com

MAGTROL SA
Centre technologique Montena
1728 Rossens/Fribourg, Switzerland
Phone: +41 (0)26 407 3000
Fax: +41 (0)26 407 3001
E-mail: magtrol@magtrol.ch

Subsidiaries in:
Great Britain
Germany • France
China • India
Worldwide Network
of Sales Agents

