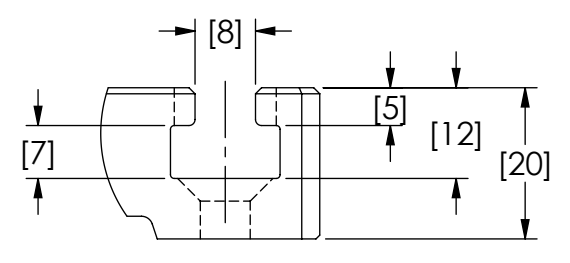
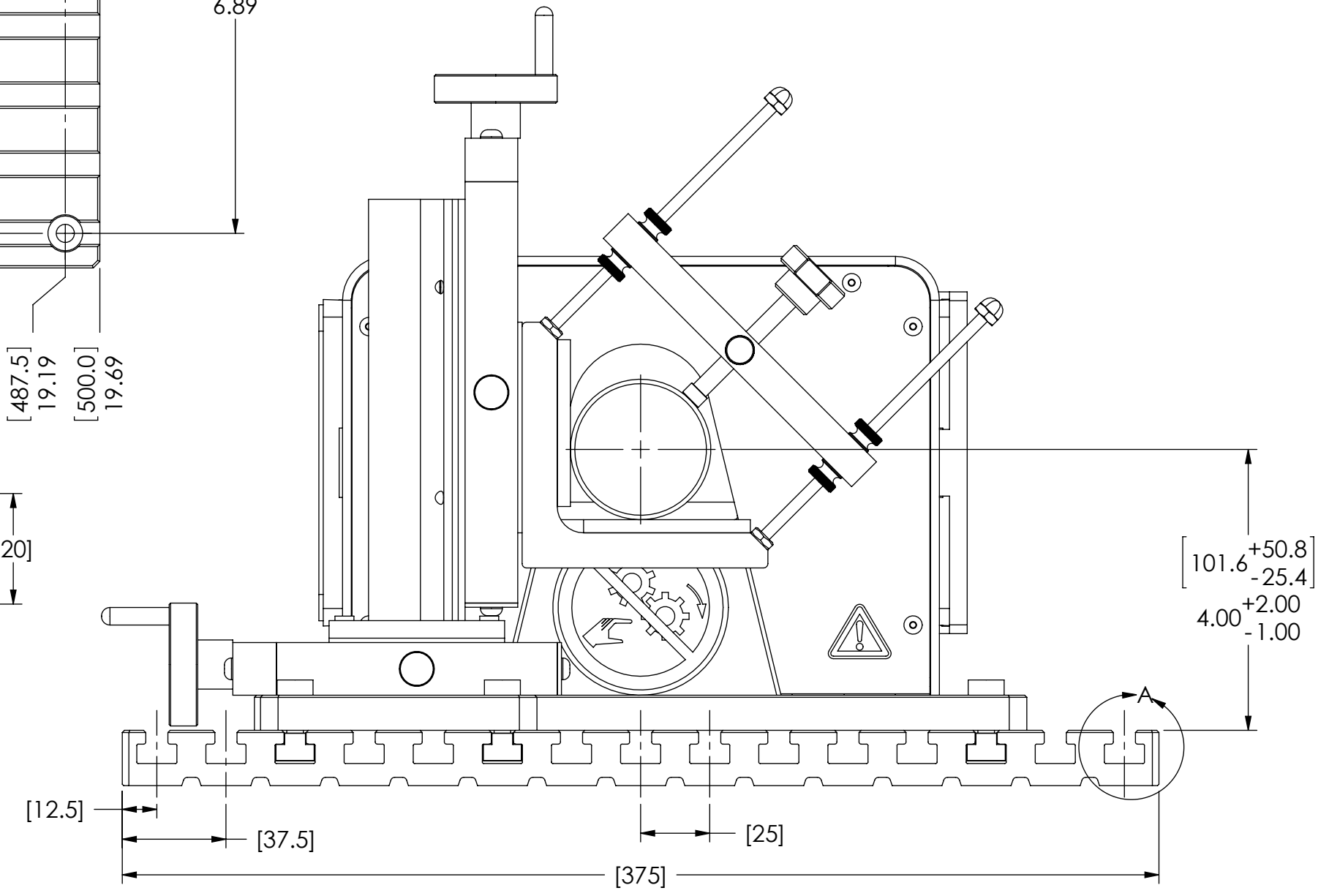


3-D VIEW  
SCALE 1 : 4

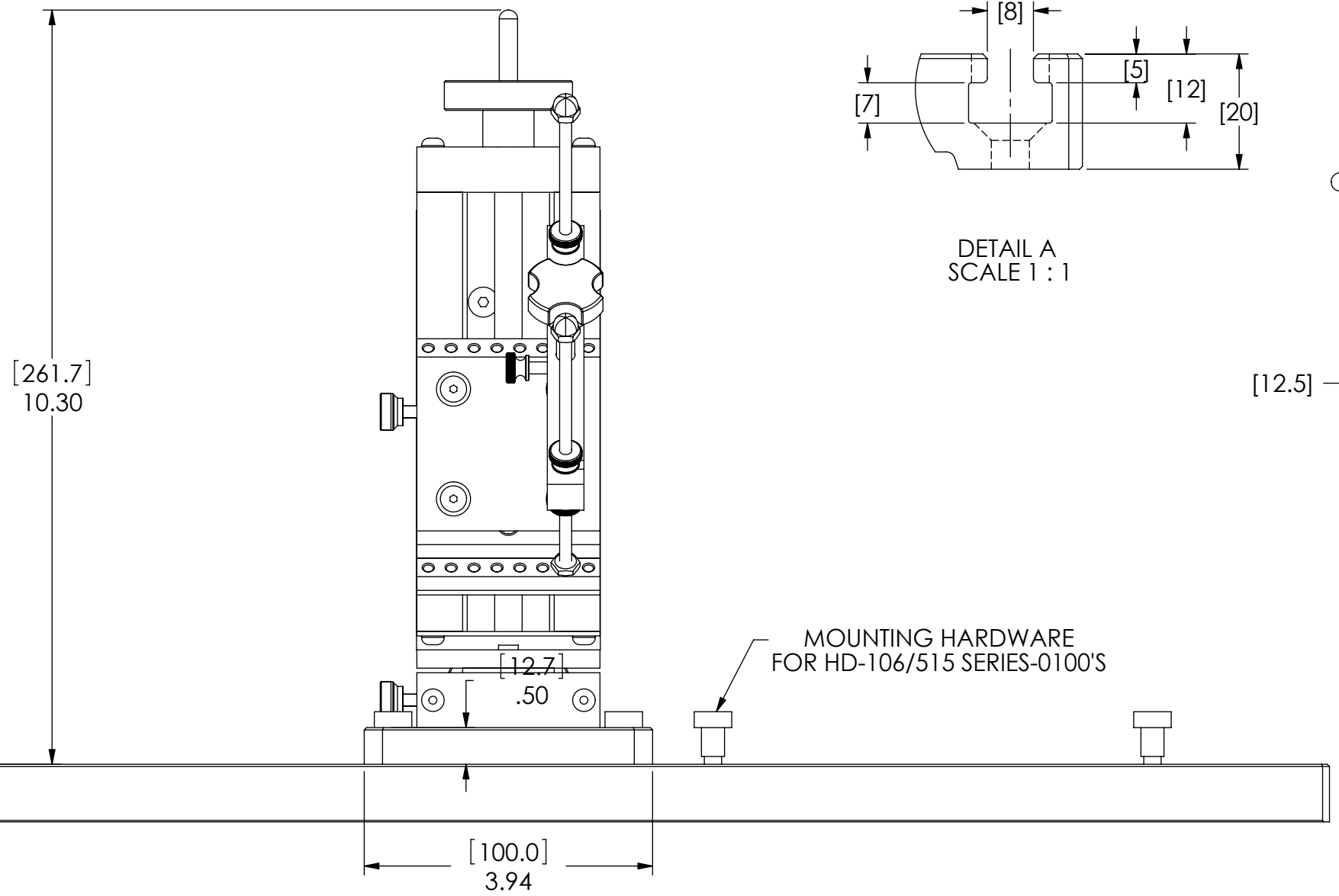
6X  $\phi$ .26[6.6] THRU  
 $\phi$ .53[13.5]  $\nabla$ .47[12.0]  
 $\phi$ .50[12.6] X 90°



DETAIL A  
SCALE 1 : 1


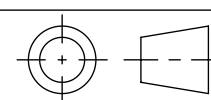


UP TO  $\phi$ 4" [101.6] CAPACITY  
SHOWN WITH  $\phi$ 2" [50.8] MOTOR



MOUNTING HARDWARE  
FOR HD-106/515 SERIES-0100'S

DIMENSIONS IN [ ] ARE MILLIMETERS

|  |   |            |               |  |
|--|---|------------|---------------|--|
| MATERIAL:  | DESIGN  | DTW        | 12-04-03      |  <b>MAGTROL INC.</b><br>70 GARDENVILLE PKWY, W.<br>BUFFALO, NEW YORK 14224-1322 |
| FINISH:  | DRAWN   | DTW        | 03-30-04      |  |
|  | CHECKED   | AJC        | 03-30-04      |  |
| THIRD ANGLE PROJECTION   |    |            |               | TITLE<br><b>AMF-1<br/>ADJUST MOTOR FXTR</b>  |
| THIS DRAWING AND SPECIFICATION<br>CONTAINS PROPRIETARY INFORMATION<br>TO MAGTROL INC. ANY DISCLOSURE<br>OR REPRODUCTION OF THIS DOCUMENT<br>WITHOUT WRITTEN AUTHORIZATION FROM<br>MAGTROL INC. IS EXPRESSLY PROHIBITED | UNLESS OTHERWISE SPECIFIED:<br>DIMENSIONS ARE IN INCHES,<br>DIAMETERS CONCENTRIC-.003 TIR,<br>FACES PERPENDICULAR-.003<br>INTERPRETATION PER ASME<br>Y14.5M-1994<br>REMOVE ALL BURRS AND BREAK<br>SHARP EDGES .005/.010 X 45°. ALL<br>INSIDE CORNERS TO BE .02 R MAX.<br>TOLERANCES |            |               | USED ON:<br>SIMILAR TO: 204215   |
|  | .XX $\pm$ .01      FRAC. $\pm$ 1/64"<br>.XXX $\pm$ .005    ANG. $\pm$ 1°<br>SURFACE FINISH 125 RMS MAX. U.O.S.  |            |               | DWG. NO.<br><b>204205</b>  |
|  | SIZE  | SCALE      | SHEET #       | REV  |
|  | <b>C</b>  | <b>1:2</b> | <b>2 OF 2</b> | <b>B</b>   |