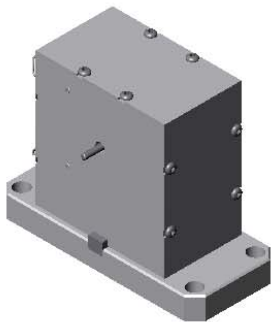
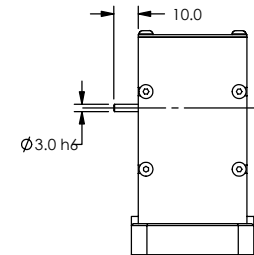
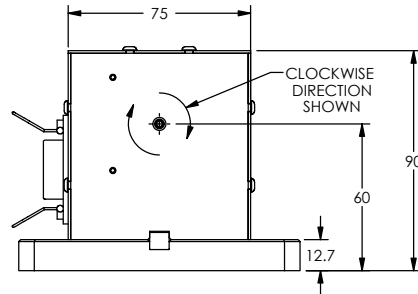
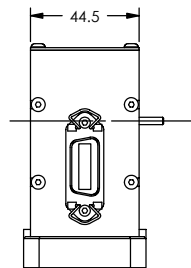
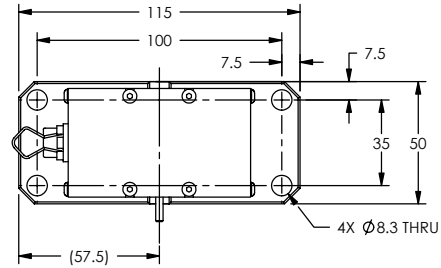
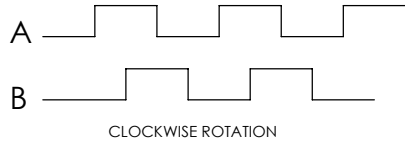



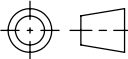
SOLID MODEL AVAILABLE

MODEL	MAXIMUM SPEED (rpm)	PULSE COUNT (ppr)	MAXIMUM DRAG TORQUE @ 1000 rpm (mNm)	INERTIA (kg m ²)	ELECTRICAL CONNECTIONS	
					OUTPUT FUNCTION	PIN # - 14 PIN CONNECTOR
89E007	35,000	60	0.056	4.266 X 10 ⁻⁷	COM	8
					+5V	7
					A	10
					B	2



3 DIMENSIONAL VIEW
SCALE 1 : 2

NOTE: DIMENSIONS ARE IN MILLIMETERS

MATERIAL:	DESIGN	AJC	05/31/06		MAGTROL INC. 70 GARDENVILLE PKWY., W. BUFFALO, NEW YORK 14224-1322
	DRAWN	AJC	05/31/06		
FINISH:	CHECKED	DTW	05/31/06	TITLE	
	THIRD ANGLE PROJECTION 			EN-0060, ENCODER, 60 BIT, LOW INERTIA	
THIS DRAWING AND SPECIFICATION CONTAINS PROPRIETARY INFORMATION TO MAGTROL INC. ANY DISCLOSURE OR REPRODUCTION OF THIS DOCUMENT WITHOUT WRITTEN AUTHORIZATION FROM MAGTROL INC. IS EXPRESSLY PROHIBITED			UNLESS OTHERWISE SPECIFIED: DIMENSIONS ARE IN MILLIMETERS. DIAMETERS CONCENTRIC: .08 TIR. FACES PERPENDICULAR: .08 INTERPRETATION PER ASME Y14.5M-1994		DWG. NO.
			REMOVE ALL BURRS AND BREAK SHARP EDGES .13/.25 X 45°. ALL INSIDE CORNERS TO BE .5 R MAX. TOLERANCES: X ± .4 .XX ± .13 X ± .25 ANG. ± 1° SURFACE FINISH 3.2 µm MAX. U.O.S.		
SIZE				SCALE	SHEET #
B				1:2	2 OF 2